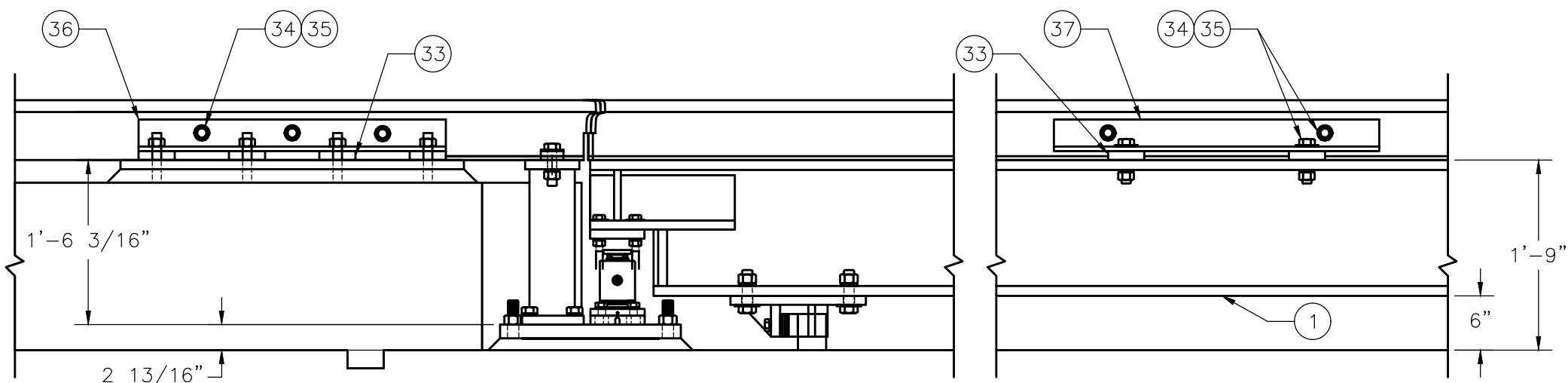
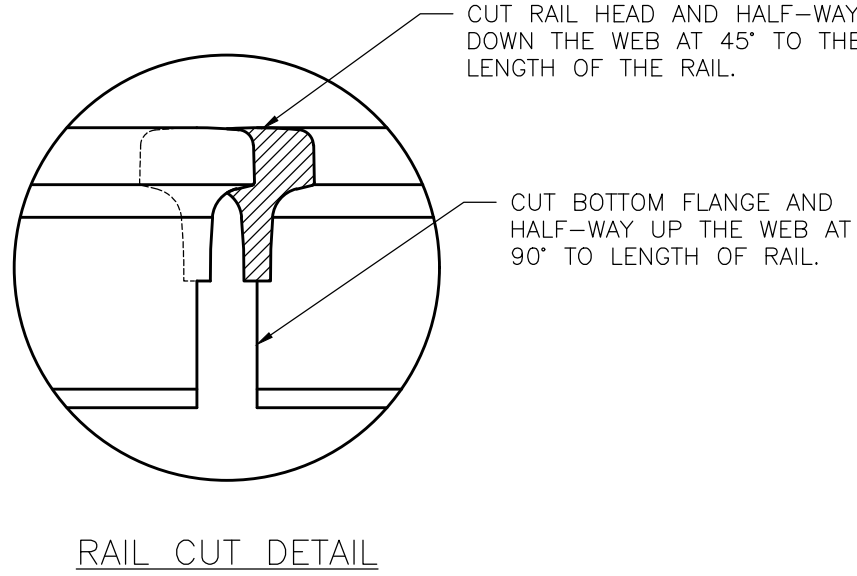
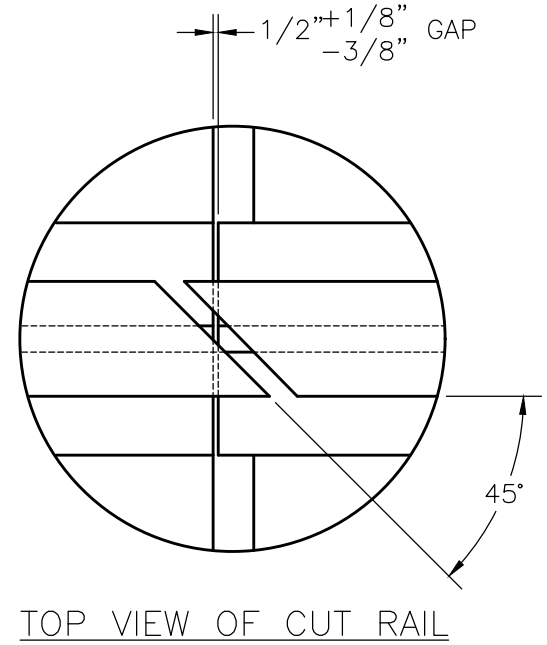
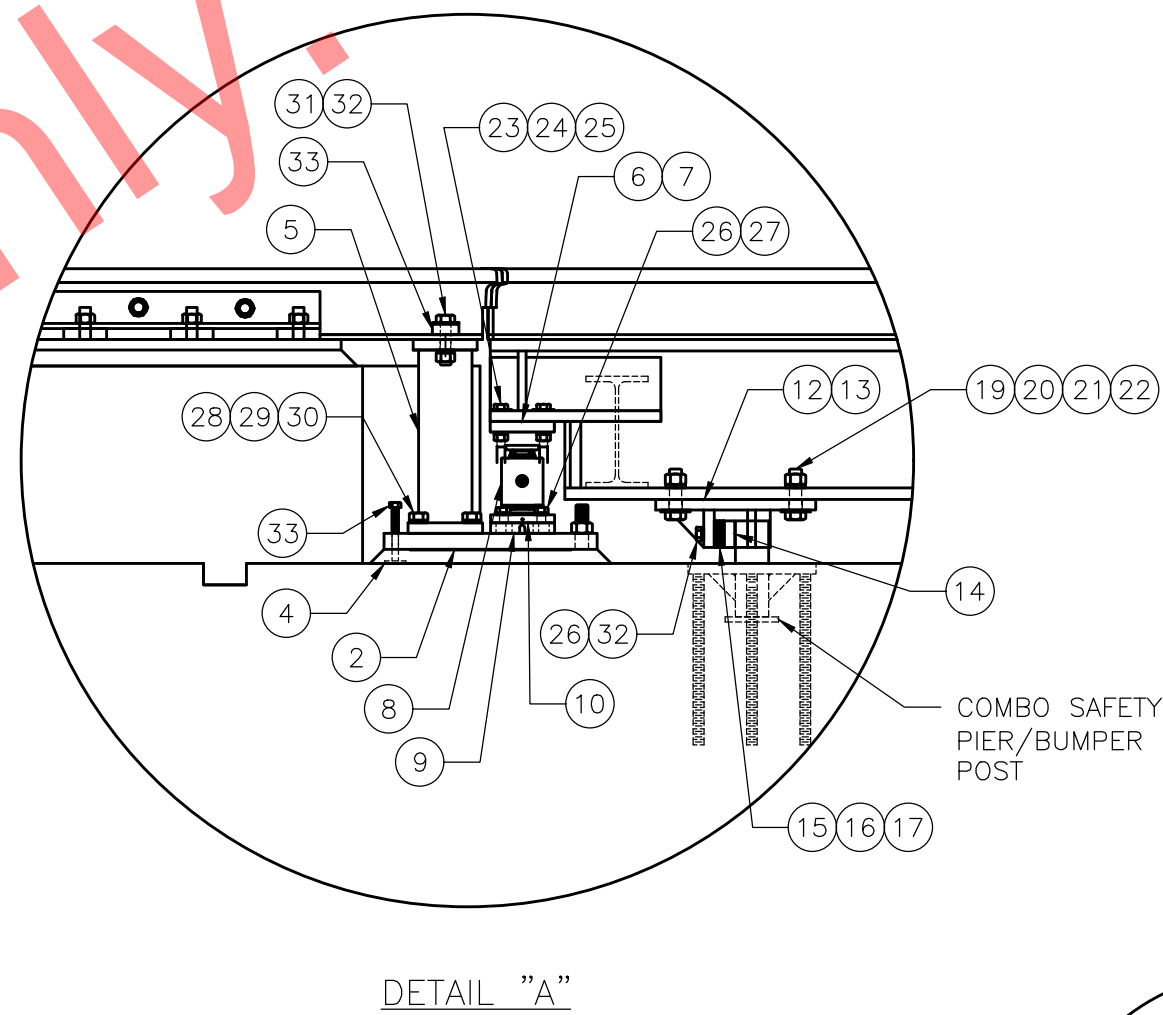
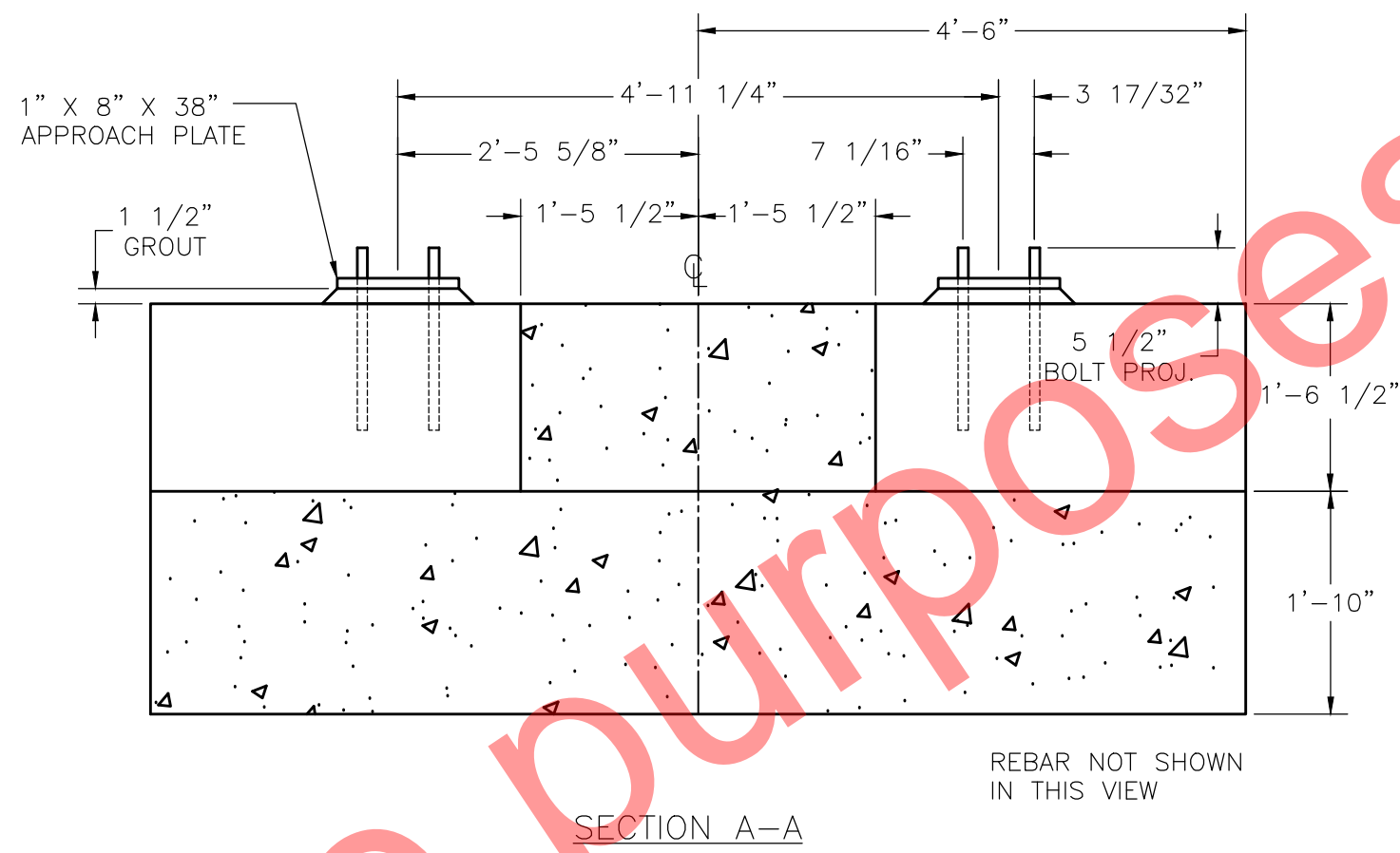


BILL OF MATERIALS			
ITEM	QTY	PART NO.	DESCRIPTION
1	1	171545	WEIGHBRIDGE WDMT, 12'-6", SINGLE
2	4	171855	GROUT PLATE, END, 1'-8" X 1'-8 7/8" X 1 1/2" (15 HOLES)
3	12	59600	1/4" X 2" X 2" STEEL PADS
4	4	171857	SPACER WDMT, APPROACH COLUMN
5	4	171858	UPPER RECEIVER WDMT.
6	4	70508	UPPER BEARING CUP
7	4	171852	LOAD CELL, FLINTEC RC3-50T-1000 OHM
8	4	171859	LOWER RECEIVER WDMT.
9	8	73972	CLAMP PLATE, 2 1/2" X 6" X 3/4"
11	2	171590	CHECK BRACKET WDMT, LH
12	2	171585	CHECK BRACKET WDMT, RH
13	4	171856	BUMPER PLATE W/TAP HOLES, 2 1/2" X 5 3/4" X 1"
14	8	74005	BUMPER SHIM PLATE, PLATED, 1/4" THICK
15	8	74007	BUMPER SHIM PLATE, PLATED, 1/8" THICK
16	8	74009	BUMPER SHIM PLATE, PLATED, 1/16" THICK
17	16	54304	1 1/8-7 HEX NUT
18	16	54255	1 1/8" FLAT WASHER
19	16	54788	1 1/8" SPRING LOCK WASHER
20	16	74023	1 1/8" X 4" HEX BOLT GRADE 5
21	16	54555	3/4-10 X 3 1/2" CAP SCREW
22	16	54264	3/4-10 HEX NUT
23	16	54233	3/4" FLAT WASHER
24	40	54776	3/4" SPRING LOCK WASHER
25	16	54532	3/4-10 X 3" CAP SCREW
26	16	54664	1-8 X 2 1/2" CAP SCREW
27	32	54782	1" SPRING LOCK WASHER
28	16	54249	1" FLAT WASHER
29	8	74024	SS 3/4-16 X 3" BOLT, FINE
30	12	79783	5/8-11 X 5" MACH. FULL THD BOLT
31	8	54547	1"-8 X 3 1/2" CAP SCREW
32	8	54277	1"-8 HEX NUT
ANTI-CREEP & RAIL HARDWARE IF PURCHASED BY CUSTOMER			
33	256	54294	FOSTER #62 RAIL CLIP
34	24	54435	1" X 4 1/4" BOLT, A325 W/NUT, HIGH STRENGTH
35	24	54782	1" SPRING LOCK WASHER
36	8	171897	ANTI-CREEP WDMT, APPROACH
37	4	171896	ANTI-CREEP WDMT, LP RRT, LIVE RAIL



- GENERAL NOTES:
- THIS SCALE IS DESIGNED AND MANUFACTURED IN ACCORDANCE WITH REGULATIONS ESTABLISHED BY THE AMERICAN ASSOCIATION OF RAILROADS "AAR" AND THE NATIONAL INSTITUTE OF STANDARDS AND TECHNOLOGY "N.I.S.T".
 - THE SCALE IS DESIGNED TO ACCEPT A 115 LB. AREA RAIL, AS REQUIRED AS MINIMUM BY AAR. THE APPROACH RAILS AND SCALE WEIGH RAIL SHOULD BE THE SAME WEIGHT. ALL RAILS ARE TO BE SUPPLIED BY THE CUSTOMER.
 - THE APPROACH ANCHOR BOLTS, APPROACH RAIL PLATES, RAIL CLIPS AND ANTI-CREEP DEVICES ARE ALL SUPPLEMENTAL ITEMS. THE QUANTITIES REQUIRED WILL VARY DEPENDING ON SCALE SIZE, APPROACH LENGTHS AND MODULE SPACING. THEY CAN BE SUPPLIED BY FAIRBANKS SCALES WHEN ORDERED AS ACCESSORIES.
 - RAILS SHOULD BE MITER CUT AT THE ENDS OF WEIGH RAILS AND APPROACH RAILS TO ASSURE SMOOTH TRANSFER OF WHEELS IN ORDER TO REDUCE IMPACT LOADING (SEE RAIL CUT DETAIL).
 - AAR SCALE SPECIFICATIONS STATE THAT THE RAIL ON THE APPROACH, DEAD SPACE AND WEIGHBRIDGE SHALL BE PROPERLY ANCHORED TO PREVENT CREEPING OF RAILS. THIS IS DONE IN ORDER TO MAINTAIN THE PROPER GAP BETWEEN THE WEIGH RAIL AND THE APPROACH RAIL. TO INSTALL ANTI-CREEP ASSEMBLIES THE WEB OF THE RAILS MUST BE DRILLED TO ACCEPT ANCHORING BOLTS.
 - THE LOAD CELL BASE PLATES ARE THE FOUNDATION UPON WHICH THE SCALE STRUCTURE REST AND THEIR LEVEL, ACCURATE POSITION IS BASIC TO THE ENTIRE INSTALLATION. WORK FROM A CENTERLINE COMMON TO BOTH SCALE UNITS. INSTALL BASE PLATES LEVEL TO WITHIN 0.015 IN 12" AND IN THE PLANE AS INDICATED WITHIN 1/16". USE THE MACHINED SURFACE OF THE LOAD CELL BASE PLATE AS THE REFERENCE PLANE.
 - THE GROUT UNDER THE BASE PLATES MUST BE A NON-SHRINK, NON-METALLIC GROUT SUCH AS SEAL TIGHT NO. 588 AS MANUFACTURED BY W.R. MEADOWS INC. OR EQUAL. MIX FOR MINIMUM FLOW (PLASTIC) AND FORCE GROUT UNDER ENTIRE AREA OF BASE OF PLATES BY RODDING. ALLOW 3 DAYS FOR GROUT TO CURE BEFORE HEAVY TRAFFIC IS ALLOWED ON SCALE.
 - PER AAR REQUIREMENTS, ALL RAILS SHALL BE ANCHORED TO PREVENT THE APPROACH RAILS AND WEIGH RAILS FROM CREEPING. THIS REQUIREMENT IS IN ORDER TO MAINTAIN THE PROPER GAP BETWEEN THE RAILS. ANTI-CREEP WELDMENTS ARE AVAILABLE FROM FAIRBANKS SCALES AS A SUPPLEMENTAL ACCESSORY.