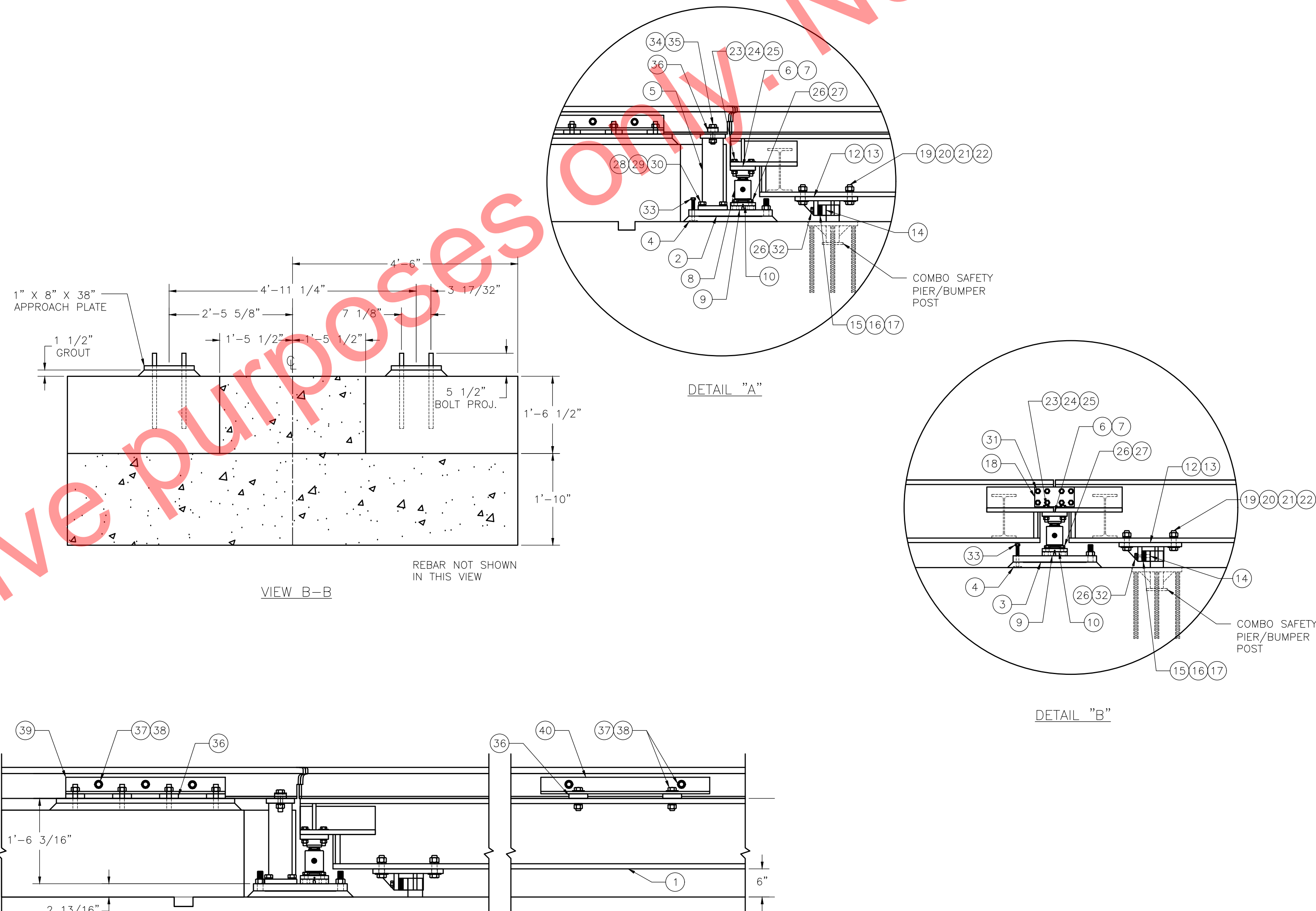
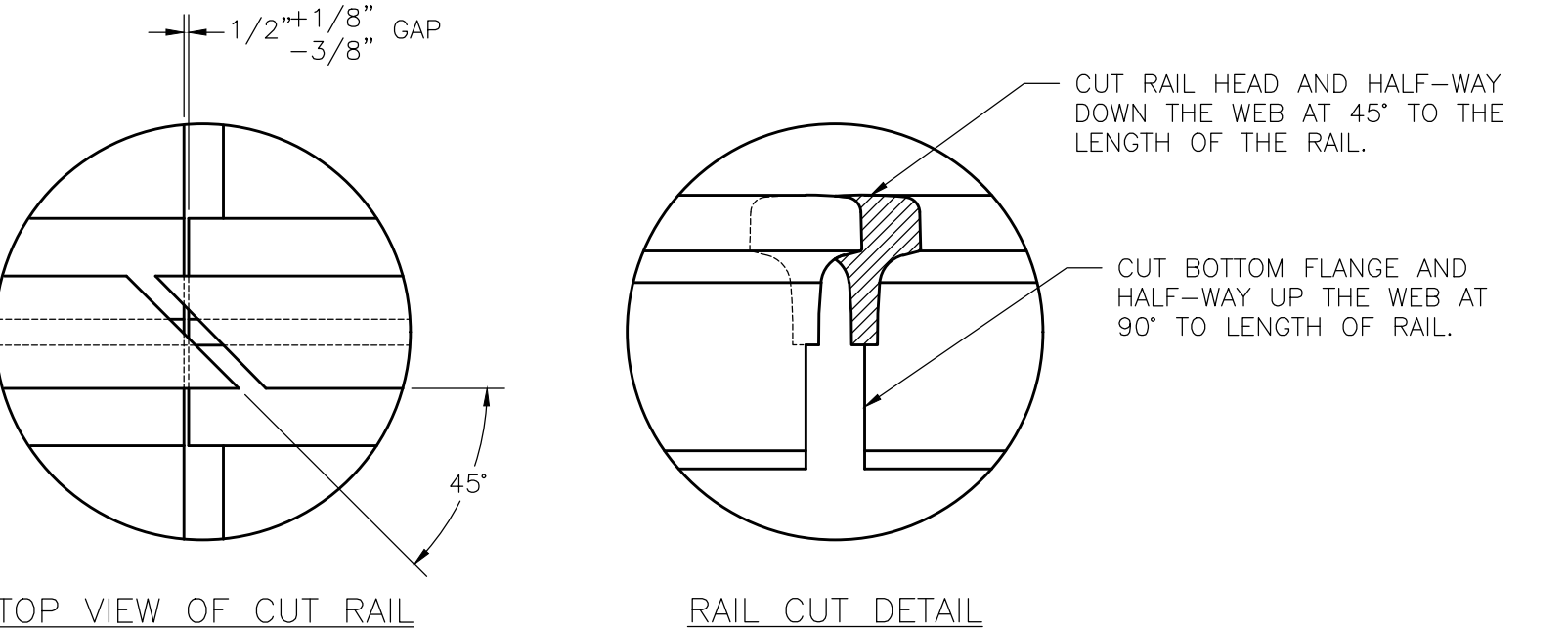


BILL OF MATERIALS			
ITEM	QTY	PART NO.	DESCRIPTION
1	2	171550	WEIGHBRIDGE WDMT, 12'-5 3/4", DOUBLE
2	4	171855	GROUT PLATE, END, 1'-8" X 1'-8 7/8" X 1 1/2" (15 HOLES)
3	2	171877	GROUT PLATE, INTERIOR, 1'-8" X 1'-8 7/8" X 1 1/2" (11 HOLES)
4	18	59600	1/4" X 2" X 2" STEEL PADS
5	4	171857	SPACER WDMT, APPROACH COLUMN
6	6	171858	UPPER RECEIVER WDMT.
7	6	70508	UPPER BEARING CUP
8	6	171852	LOAD CELL, FLINTEC RC3-50T-1000 OHM
9	6	171859	LOWER RECEIVER WDMT.
10	12	73972	CLAMP PLATE, 2 1/2" X 6" X 3/4"
12	3	171590	CHECK BRACKET WDMT, LH
13	3	171585	CHECK BRACKET WDMT, RH
14	6	171856	BUMPER PLATE W/TAP HOLES, 2 1/2" X 5 3/4" X 1"
15	12	74005	BUMPER SHIM PLATE, PLATED, 1/4" THICK
16	12	74007	BUMPER SHIM PLATE, PLATED, 1/8" THICK
17	12	74009	BUMPER SHIM PLATE, PLATED, 1/16" THICK
18	4	171878	CONNECTION PLATE W/(8) HOLES, 1" X 4 3/4" X 9 1/2"
19	24	54304	1 1/8-7 HEX NUT
20	24	54255	1 1/8" FLAT WASHER
21	24	54788	1 1/8" SPRING LOCK WASHER
22	24	74023	1 1/8" X 4" HEX BOLT GRADE 5
23	24	54555	3/4-10 X 3 1/2" CAP SCREW
24	24	54264	3/4-10 HEX NUT
25	24	54233	3/4" FLAT WASHER
26	60	54776	3/4" SPRING LOCK WASHER
27	24	54532	3/4-10 X 3" CAP SCREW
28	16	54664	1-8 X 2 1/2" CAP SCREW
29	40	54782	1" SPRING LOCK WASHER
30	24	54249	1" FLAT WASHER
31	16	54391	3/4-10 X 6", A325 BOLT W/NUT, HIGH STRENGTH
32	12	74024	SS 3/4-16 X 3" BOLT, FINE
33	18	79783	5/8-11 X 5" MACH FULL THD BOLT
34	8	54547	1"-8 X 3 1/2" CAP SCREW
35	8	54277	1"-8 HEX NUT
ANTI-CREEP & RAIL HARDWARE IF PURCHASED BY CUSTOMER			
36	288	54294	FOSTER #62 RAIL CLIP
37	24	54435	1" X 4 1/4" BOLT, A325 W/NUT, HIGH STRENGTH
38	24	54782	1" SPRING LOCK WASHER
39	8	171897	ANTI-CREEP WDMT, APPROACH
40	4	171896	ANTI-CREEP WDMT, LP RRT, LIVE RAIL



- GENERAL NOTES:
- THIS SCALE IS DESIGNED AND MANUFACTURED IN ACCORDANCE WITH REGULATIONS ESTABLISHED BY THE AMERICAN ASSOCIATION OF RAILROADS "AAR" AND THE NATIONAL INSTITUTE OF STANDARDS AND TECHNOLOGY "N.I.S.T."
  - THE SCALE IS DESIGNED TO ACCEPT A 115 LB. AREA RAIL, AS REQUIRED AS MINIMUM BY AAR. THE APPROACH RAILS AND SCALE WEIGH RAIL SHOULD BE THE SAME WEIGHT. ALL RAILS ARE TO BE SUPPLIED BY THE CUSTOMER.
  - THE APPROACH ANCHOR BOLTS, APPROACH RAIL PLATES, RAIL CLIPS AND ANTI-CREEP DEVICES ARE ALL SUPPLEMENTAL ITEMS. THE QUANTITIES REQUIRED WILL VARY DEPENDING ON SCALE SIZE, APPROACH LENGTHS AND MODULE SPACING. THEY CAN BE SUPPLIED BY FAIRBANKS SCALES WHEN ORDERED AS ACCESSORIES.
  - RAILS SHOULD BE MITER CUT AT THE ENDS OF WEIGH RAILS AND APPROACH RAILS TO ASSURE SMOOTH TRANSFER OF WHEELS IN ORDER TO REDUCE IMPACT LOADING (SEE RAIL CUT DETAIL).
  - AAR SCALE SPECIFICATIONS STATE THAT THE RAIL ON THE APPROACH, DEAD SPACE AND WEIGHBRIDGE SHALL BE PROPERLY ANCHORED TO PREVENT CREEPING OF RAILS. THIS IS DONE IN ORDER TO MAINTAIN THE PROPER GAP BETWEEN THE WEIGH RAIL AND THE APPROACH RAIL. TO INSTALL ANTI-CREEP ASSEMBLIES THE WEB OF THE RAILS MUST BE DRILLED TO ACCEPT ANCHORING BOLTS.
  - THE LOAD CELL BASE PLATES ARE THE FOUNDATION UPON WHICH THE SCALE STRUCTURE REST AND THEIR LEVEL, ACCURATE POSITION IS BASIC TO THE ENTIRE INSTALLATION. WORK FROM A CENTERLINE COMMON TO BOTH SCALE UNITS. INSTALL BASE PLATES LEVEL TO WITHIN 0.015 IN 12" AND IN THE PLANE AS INDICATED WITHIN 1/16". USE THE MACHINED SURFACE OF THE LOAD CELL BASE PLATE AS THE REFERENCE PLANE.
  - THE GROUT UNDER THE BASE PLATES MUST BE A NON-SHRINK, NON-METALLIC GROUT SUCH AS SEAL TIGHT NO. 568 AS MANUFACTURED BY W.R. MEADOWS INC. OR EQUAL. MIX FOR MINIMUM FLOW (PLASTIC) AND FORCE GROUT UNDER ENTIRE AREA OF BASE OF PLATES BY RODDING. ALLOW 3 DAYS FOR GROUT TO CURE BEFORE HEAVY TRAFFIC IS ALLOWED ON SCALE.
  - PER AAR REQUIREMENTS, ALL RAILS SHALL BE ANCHORED TO PREVENT THE APPROACH RAILS AND WEIGH RAILS FROM CREEPING. THIS REQUIREMENT IS IN ORDER TO MAINTAIN THE PROPER GAP BETWEEN THE RAILS. ANTI-CREEP WELDMENTS ARE AVAILABLE FROM FAIRBANKS SCALES AS A SUPPLEMENTAL ACCESSORY.



THE INFORMATION CONTAINED HEREIN AND ANY INFORMATION CONTAINED HEREIN IS THE PROPERTY OF THURMAN SCALE. IT IS NOT TO BE USED, REPRODUCED, COPIED, OR TRANSMITTED IN ANY FORM OR BY ANY MEANS, WITHOUT WRITTEN PERMISSION FROM THURMAN SCALE. ANY UNAUTHORIZED USE OF THIS INFORMATION SHALL BE AT THE USER'S SOLE RISK AND WITHOUT LIABILITY TO THURMAN SCALE.

UNLESS OTHERWISE SPECIFIED, DIMENSIONS ARE IN INCHES. TOLERANCES ARE AS FOLLOWS: FRACTIONS DECIMALS ANGLES SURFACE DIMENSIONS HOLE DIMENSIONS THIRD ANGLE MODEL:

8765 RRT LOW PROFILE  
25'-0" DOUBLE PLATFORM  
50' APPROACHES  
85 TONS PER SECT. 170 TONS NOMINAL CAP

THURMAN SCALE  
SCALE: VARIES DRAWN/LDC: 2/21/20 SHEET: 1 OF 1 DATE: 2/21/20 APPROVED: 92749-SP