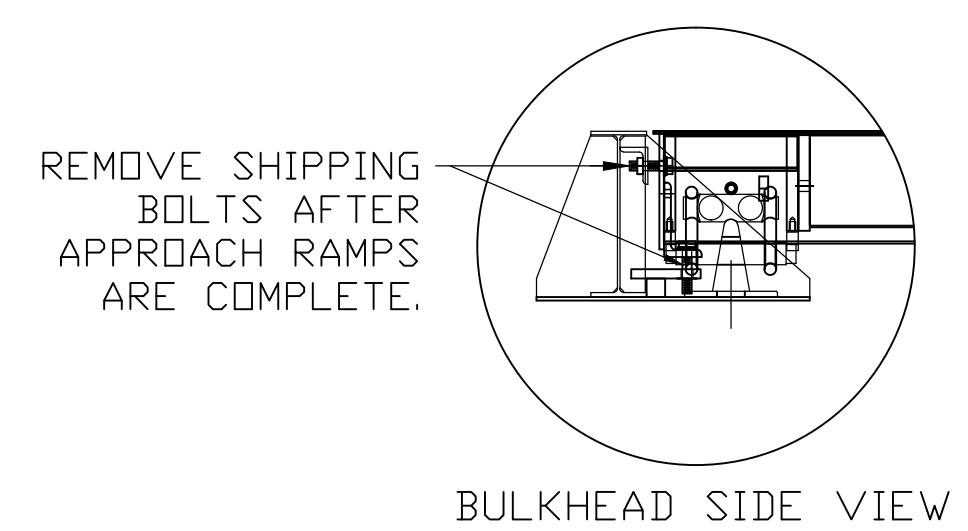
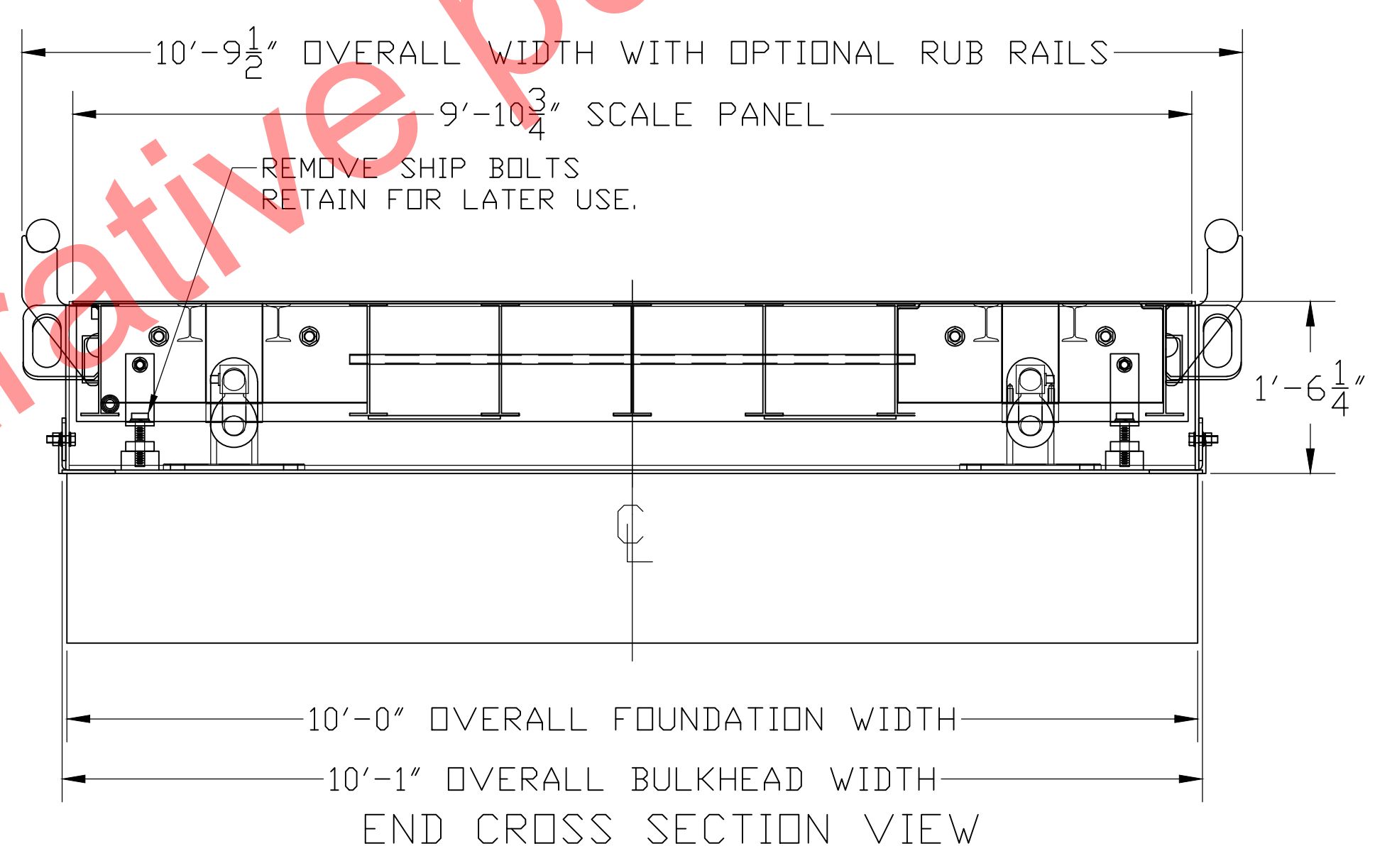


- NOTES:**
- FOUNDATION SHOWN IS DESIGNED FOR SOILS WITH A MINIMUM BEARING CAPACITY OF 3000 PSF AND ADEQUATE DRAINAGE. IF SOIL CONDITIONS DO NOT MEET THESE REQUIREMENTS, ADJUST FOUNDATION OR SOIL CONDITIONS AS REQUIRED.
  - IN AREAS OF THE COUNTRY WHERE THERE IS SEVERE FREEZING, INCREASE THE DEPTH OF THE FOUNDATION SO THAT THE BOTTOM EXTENDS BELOW THE FROST LINE, OR PROVIDE A MINIMUM OF 12" FREE DRAINING GRANULAR MATERIAL TO PREVENT FROST HEAVE.
  - N.I.S.T. H-44 REQUIREMENTS AND LOCAL WEIGHTS AND MEASURES REGULATIONS MAY REQUIRE INSTALLATION PARAMETERS SOMEWHAT DIFFERENT THAN ILLUSTRATED ON THIS PLAN. IN ORDER TO INSURE COMPLIANCE, CONSULT THE LOCAL WEIGHTS & MEASURES OFFICE PRIOR TO CONSTRUCTION.
  - REFER TO SCALE MANUAL FOR INSTALLATION AND OPERATION INSTRUCTIONS.
  - A MINIMUM OF 24" OF CLEARANCE IS REQUIRED ON JUNCTION BOX SIDE OF THE SCALE NEAR THE BOX MOUNTS.

- ASSEMBLY NOTES:**
- REFER TO SCALE MANUAL FOR FULL INSTALLATION AND OPERATION INSTRUCTIONS.
  - KEEP ALL SHIP BOLTS AND CHECK BOLTS SECURED UNTIL ALL INSTALLATION AND APPROACH RAMP WORK IS COMPLETE.
  - PLACE CENTER-BASE MODULE FIRST, FOLLOWED BY END MODULES. PLACE MODULES WITH JBOX MOUNTS ALL ON ONE SIDE AS SHOWN.
  - BOLT END PANELS TO CENTER BASE PANEL & SET ANCHORS IN SECTION STAN.
  - IF UNABLE TO ANCHOR STANDS, INSTALL BRACES BETWEEN BULKHEADS AND SECTION STANDS.
  - AFTER ALL APPROACH WORK IS COMPLETED, REMOVE SHIPPING BOLTS AND SET PROPER GAPS OF BUMPER (CHECK SYSTEM) BOLTS.
  - KEEP SHIPPING HARDWARE FOR LATER USE.



FOUNDATION CONCRETE REQUIREMENTS	
4000 P.S.I.	
AREA	QUANTITIES
PIERS AS SHOWN	6 CU. YD.
FLOOR AT 2" THICK	2 CU. YD.
TOTAL	8 CU. YD.

FOUNDATION REINFORCING BAR SCHEDULE					
ASTM A615 GRADE 60					
MARK	NO.	REQ'D.	SIZE	LENGTH	WT.
HR1	51	#4	9'-6"		324
HR2	60	#4	3'-0"		120
TOTAL WT:					444

LET	BY	DATE	REVISION
2	JCR	2/1/12	REVISED APPROACH NOTE, ADDED BRACES
1			CORRECTED ELEVATION VIEW

THIS DRAWING IS SUPPLIED AS CHECKED BELOW:

REFERENCE (ESTIMATES ONLY, NOT FOR CONSTRUCTION)

CERTIFIED FOR CONSTRUCTION, THURMAN #

CUSTOMER: \_\_\_\_\_ DATE: \_\_\_\_\_

CUSTOMER P.O.# \_\_\_\_\_

CUSTOMER APPROVAL, RETURN ONE COPY. (ORDER ON HOLD UNTIL SIGNED COPY IS RETURNED)

APPROVED AS DRAWN, APPROVED BY: \_\_\_\_\_ DATE: \_\_\_\_\_

APPROVED AS NOTED, APPROVED BY: \_\_\_\_\_ DATE: \_\_\_\_\_

THE MATERIAL AND INFORMATION CONTAINED HEREIN IS CONFIDENTIAL AND IS THE PROPERTY OF THURMAN SCALE COMPANY AND IS NOT TO BE USED, DISCLOSED, COPIED, TRANSMITTED, OR REPRODUCED WITHOUT THE PRIOR WRITTEN PERMISSION OF THURMAN SCALE COMPANY.

UNLESS OTHERWISE SPECIFIED: DIMENSIONS ARE IN INCHES TOLERANCES: FRACTIONS ±1/8" DECIMALS ±0.005 2-PLACE DECIMAL ±0.005 HOLE DIAMETERS ±1/32"

MATERIAL: A36 FINISH: \_\_\_\_\_

8560 DIAMONDBACK 40' X 10' PV FOUNDATION (90K CLC, 3 SECT. DB)

DATE: 5/19/08

SCALE: N/A

DRAWN BY: NDC

CHECKED BY: \_\_\_\_\_

APPROVED BY: \_\_\_\_\_

DRAWING NUMBER: 92388-PV

REVISION: 2