

(DRILL TYPE ANCHORS PROVIDED WITH THE SCALE)
 FOR SUBFRAMES (1 PER CORNER REQUIRED)
 3/4 DIA X 5 1/2" STUD TYPE ANCHORS
 DRILL DIA 3/4", DRILL DEPTH 3 1/2"

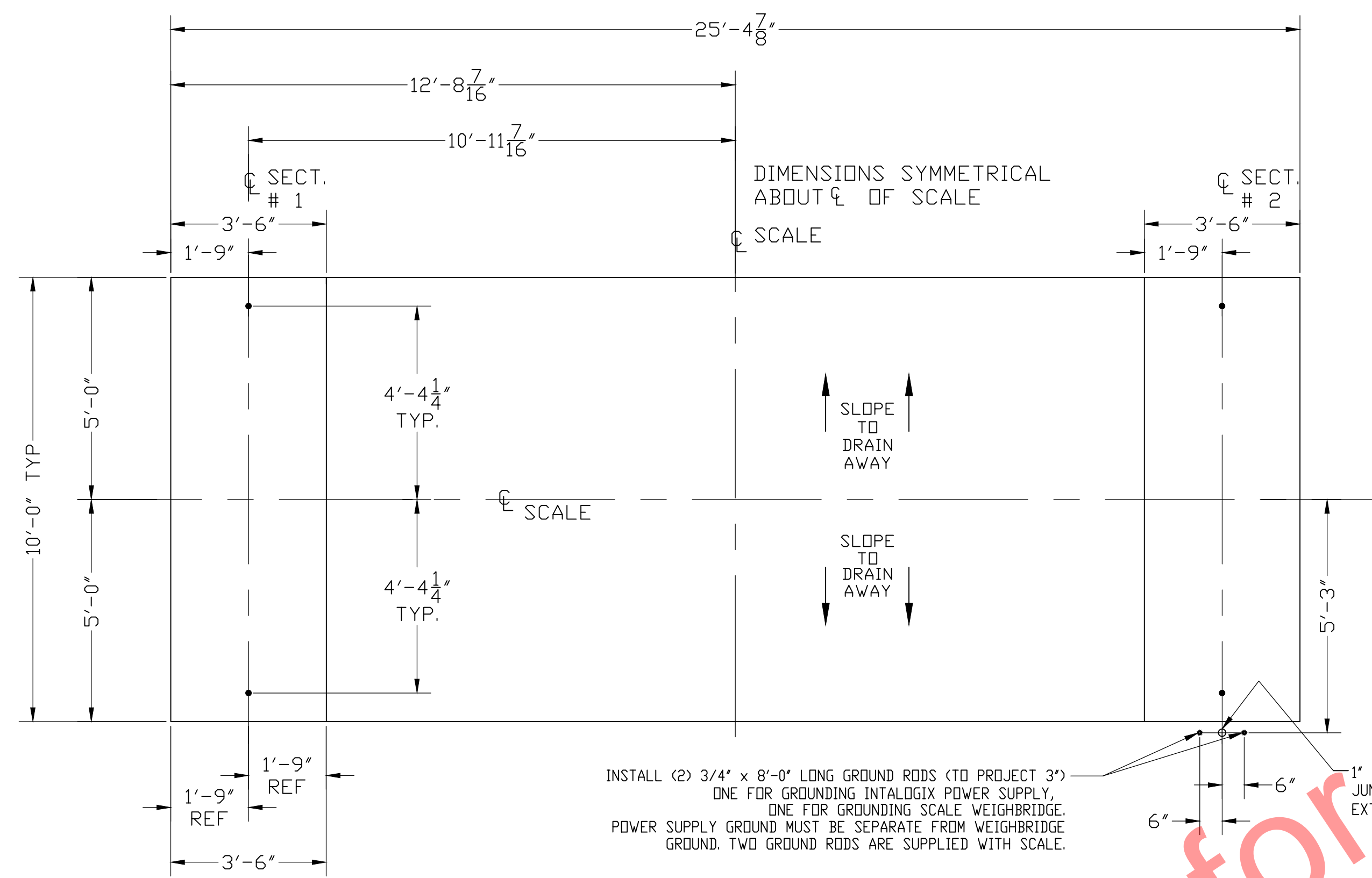
ANCHOR DETAIL

FOUNDATION CONCRETE REQUIREMENTS
 4000 P.S.I.

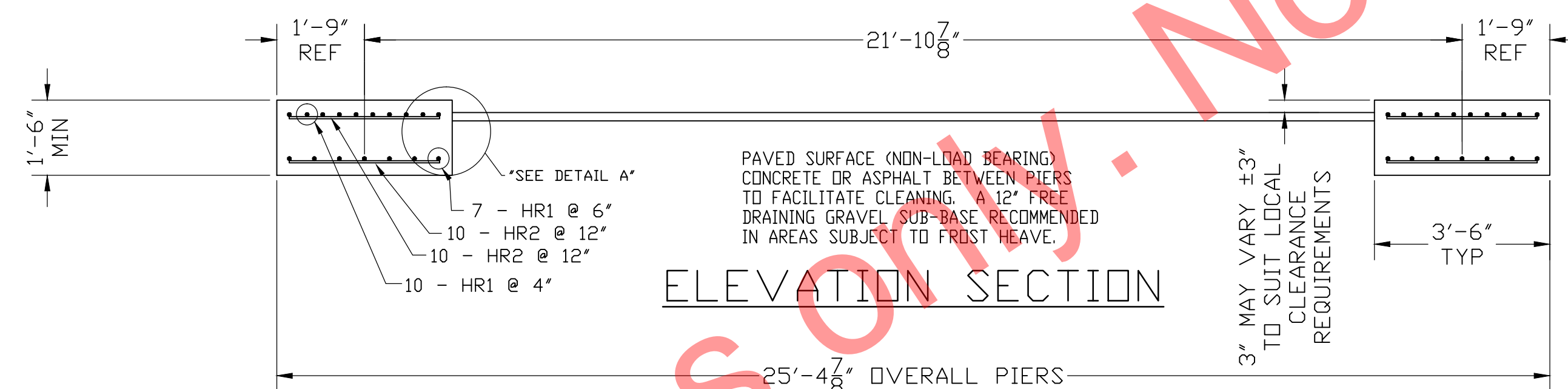
AREA	QUANTITIES
PIERS AS SHOWN	4 CU. YD.
FLOOR AT 2" THICK	1.5 CU. YD.
TOTAL	5.5 CU. YD.

FOUNDATION REINFORCING BAR SCHEDULE
 ASTM A615 GRADE 60

MARK	NO.	REQ'D.	SIZE	LENGTH	WT.
HR1	34	#4	9'-6"	216	
HR2	40	#4	3'-0"	80	
TOTAL WT:					296



PLAN VIEW



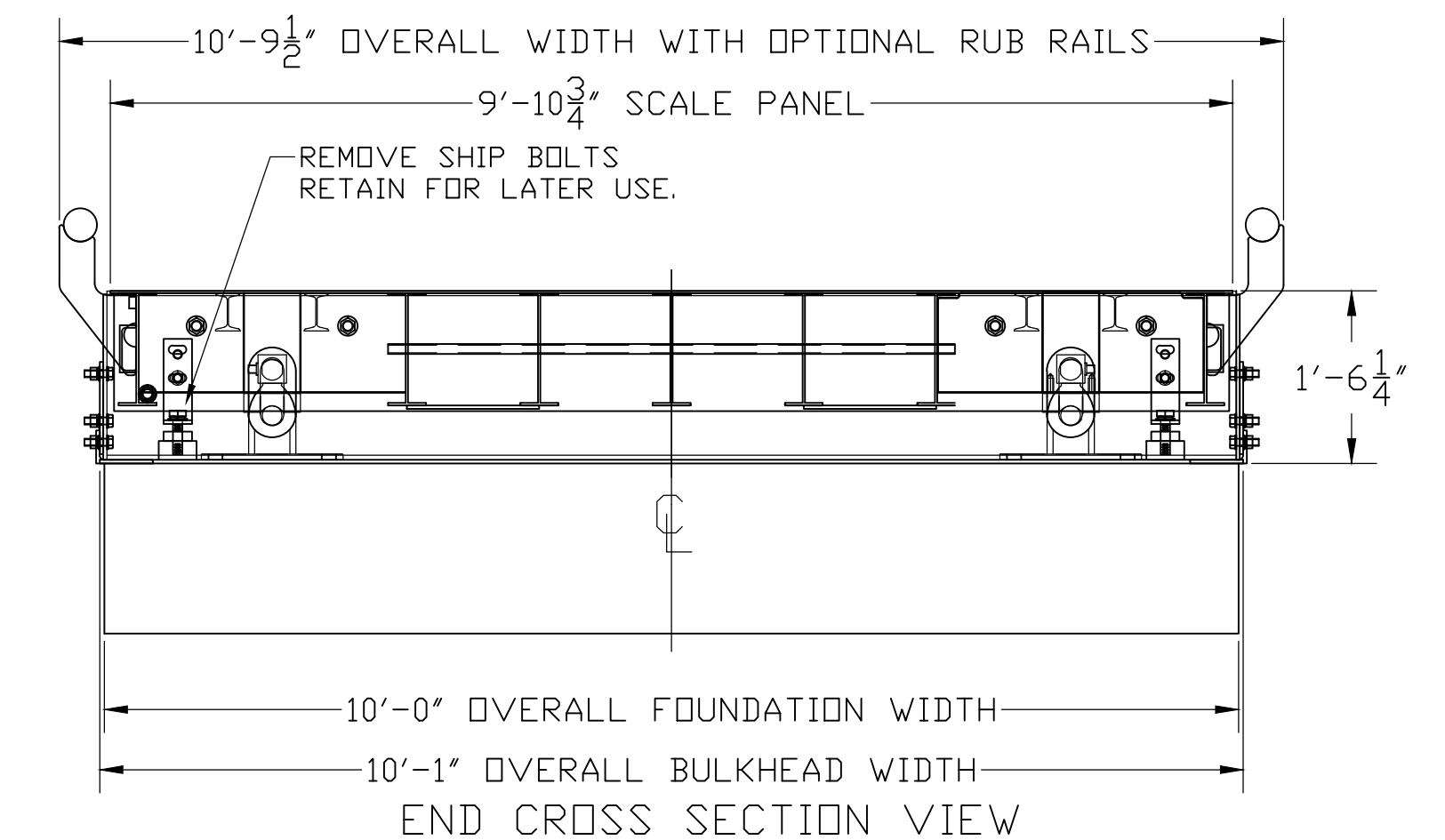
ELEVATION SECTION

ASSEMBLY NOTES:

- REFER TO SCALE MANUAL FOR FULL INSTALLATION AND OPERATION INSTRUCTIONS.
- KEEP ALL SHIP BOLTS AND CHECK BOLTS SECURED UNTIL ALL INSTALLATION AND APPROACH RAMP WORK IS COMPLETE.
- PLACE MODULE & SET ANCHORS IN BULKHEADS.
- IF UNABLE TO ANCHOR STANDS, INSTALL BRACES BETWEEN BULKHEADS AND SECTION STANDS.
- AFTER ALL APPROACH WORK IS COMPLETED, REMOVE SHIPPING BOLTS AND SET PROPER GAPS OF BUMPER (CHECK SYSTEM) BOLTS.
- KEEP SHIPPING HARDWARE FOR LATER USE.

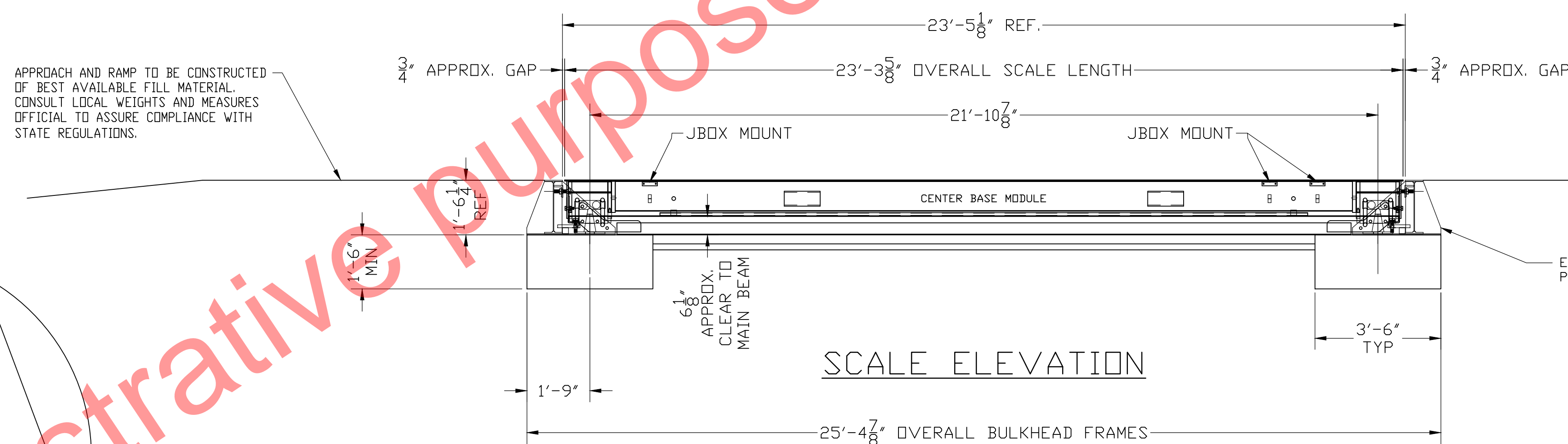
NOTES:

- FOUNDATION SHOWN IS DESIGNED FOR SOILS WITH A MINIMUM BEARING CAPACITY OF 3000 PSF AND ADEQUATE DRAINAGE. IF SOIL CONDITIONS DO NOT MEET THESE REQUIREMENTS, ADJUST FOUNDATION OR SOIL CONDITIONS AS REQUIRED.
- IN AREAS OF THE COUNTRY WHERE THERE IS SEVERE FREEZING, INCREASE THE DEPTH OF THE FOUNDATION SO THAT THE BOTTOM EXTENDS BELOW THE FROST LINE, OR PROVIDE A MINIMUM OF 12" FREE DRAINING GRANULAR MATERIAL TO PREVENT FROST HEAVE.
- N.I.S.T. H-44 REQUIREMENTS AND LOCAL WEIGHTS AND MEASURES REGULATIONS MAY REQUIRE INSTALLATION PARAMETERS SOMEWHAT DIFFERENT THAN ILLUSTRATED ON THIS PLAN. IN ORDER TO INSURE COMPLIANCE, CONSULT THE LOCAL WEIGHTS & MEASURES OFFICE PRIOR TO CONSTRUCTION.
- REFER TO SCALE MANUAL FOR INSTALLATION AND OPERATION INSTRUCTIONS.
- A MINIMUM OF 24" OF CLEARANCE IS REQUIRED ON JUNCTION BOX SIDE OF THE SCALE NEAR THE BOX MOUNTS.



END CROSS SECTION VIEW

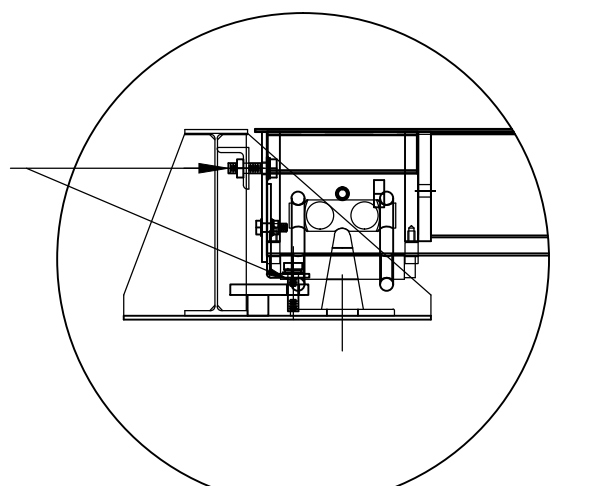
APPROACH AND RAMP TO BE CONSTRUCTED OF BEST AVAILABLE FILL MATERIAL. CONSULT LOCAL WEIGHTS AND MEASURES OFFICIAL TO ASSURE COMPLIANCE WITH STATE REGULATIONS.



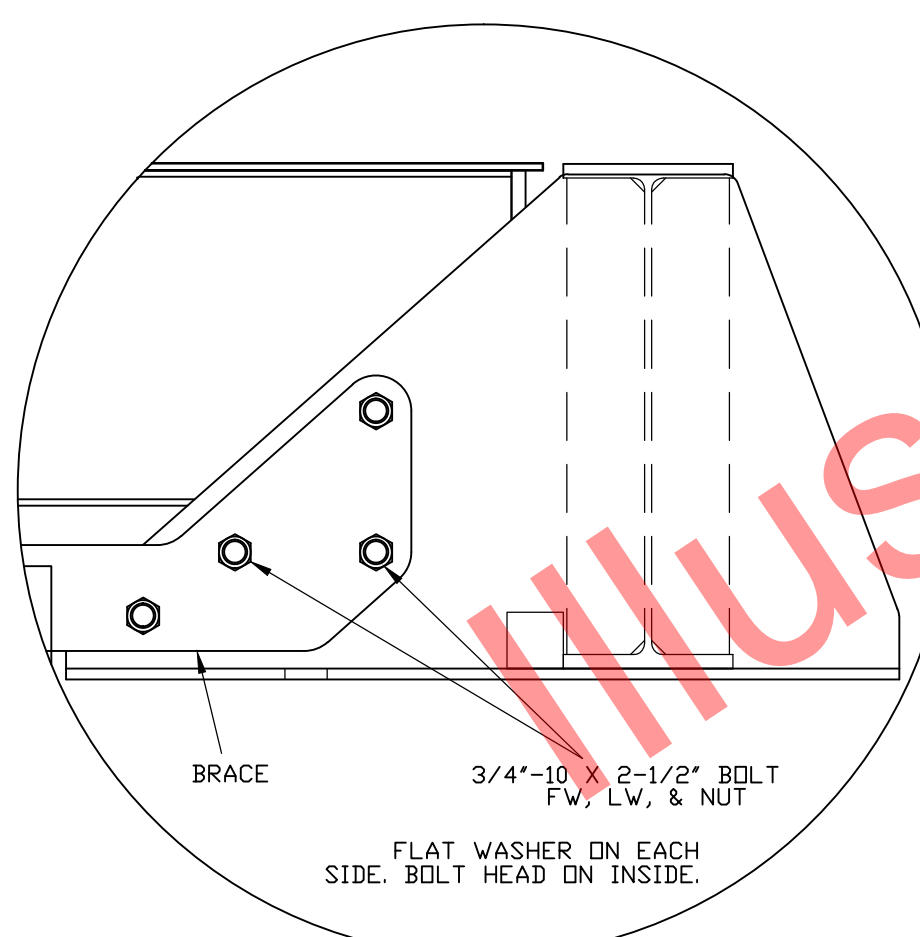
SCALE ELEVATION

END BULKHEAD ASSEMBLY, PART OF END MODULE ASY.

REMOVE SHIPPING BOLTS AFTER APPROACH RAMP ARE COMPLETE.



BULKHEAD SIDE VIEW



BRACE DETAIL
 BULKHEAD SIDE

THIS DRAWING IS SUPPLIED AS CHECKED BELOW:

- REFERENCE (ESTIMATES ONLY, NOT FOR CONSTRUCTION)
- CERTIFIED FOR CONSTRUCTION, THURMAN #
- CUSTOMER: _____ DATE: _____
- CUSTOMER P.O.# _____
- CUSTOMER APPROVAL, RETURN ONE COPY. (ORDER ON HOLD UNTIL SIGNED COPY IS RETURNED)
- APPROVED AS DRAWN, APPROVED BY: _____ DATE: _____
- APPROVED AS NOTED, APPROVED BY: _____ DATE: _____

LET	BY	DATE	REVISION
1	JCR	2/1/12	REVISED APPROACH NOTE; ADDED BRACES

COLUMBUS, OH	
8560 DIAMONDBACK 23' X 10' PV FOUNDATION (90K CLC, 2 SECT. DB)	
DATE	2/25/08
SCALE	N/A
DRAWN BY	LDC
CHECKED BY	
APPROVED BY	
DRAWING NUMBER	92387-PV
REVISION	1

THE MATERIAL AND INFORMATION CONTAINED HEREIN IS CONFIDENTIAL AND IS THE PROPERTY OF THURMAN SCALE COMPANY AND IS NOT TO BE USED, DISCLOSED, COPIED, TRANSFERRED, OR REPRODUCED WITHOUT THE PRIOR WRITTEN PERMISSION OF THURMAN SCALE COMPANY.

UNLESS OTHERWISE SPECIFIED: DIMENSIONS ARE IN INCHES TOLERANCES: FRACTIONS 1/8" ANGLES ±1° 3-PLACE DECIMAL ±0.005 2-PLACE DECIMAL ±0.02 HOLE DIAMETERS ±1/32"

MATERIAL A36 FINISH