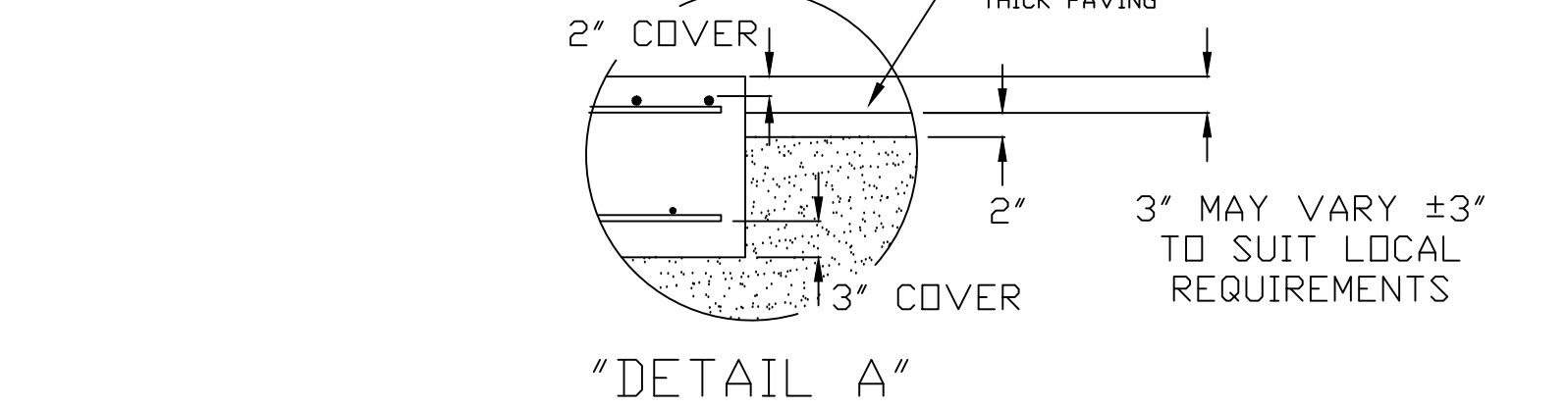


DRILL TYPE ANCHOR INFORMATION
(DRILL TYPE ANCHORS PROVIDED WITH THE SCALE)
FOR THE CORNER STANDS (16 REQUIRED)
FOR THE FULCRUM & LC STANDS (10 REQUIRED)
5/8 DIA X 6" STUD TYPE ANCHORS
DRILL DIA 5/8", DRILL DEPTH 3 1/2"

ANCHOR DETAIL

TYPICAL SIDE ELEVATION OF SCALE INSTALLATION

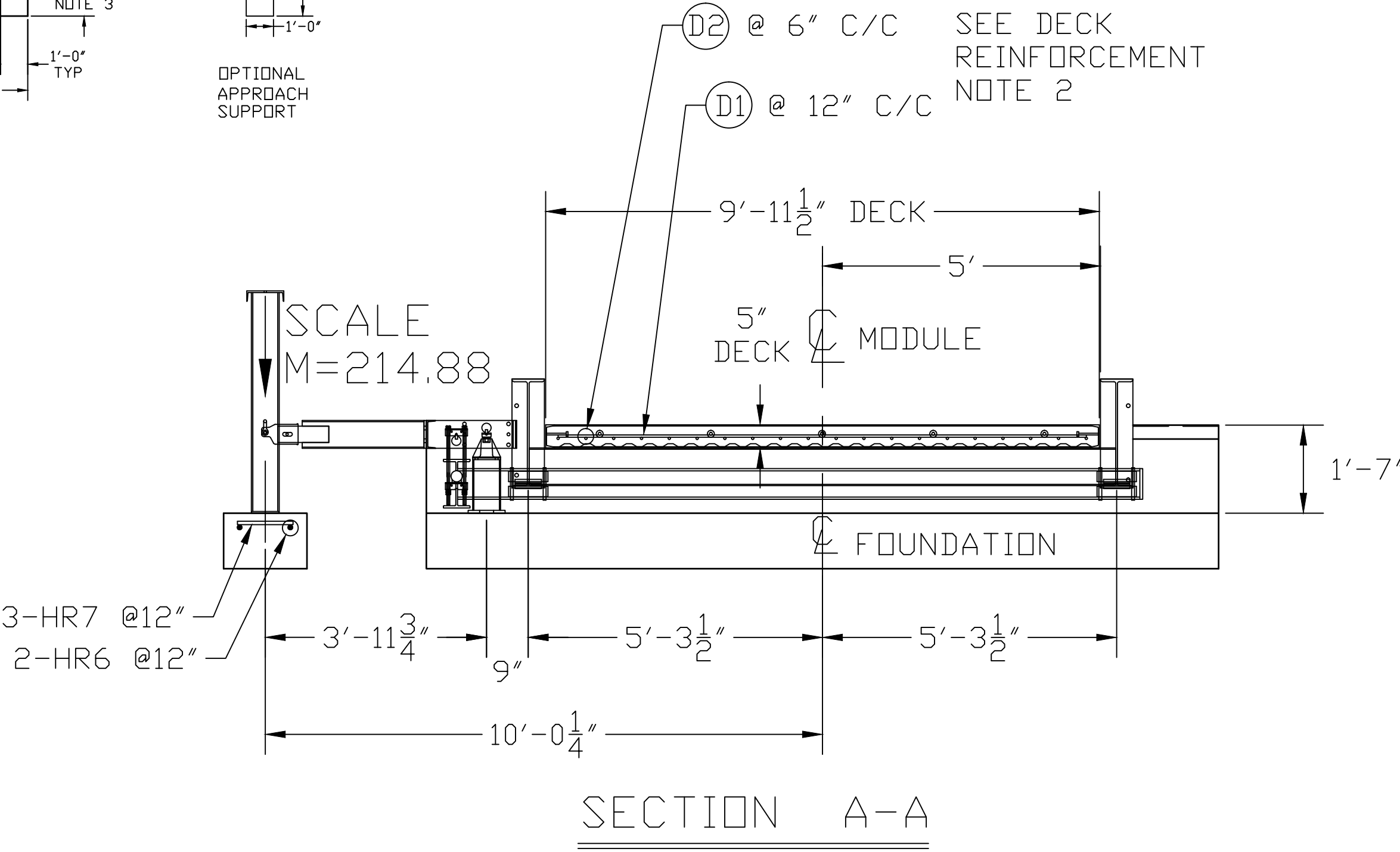


MODULE REINFORCING SCHEDULE ASTM 615 - GRADE 60						
MODULE	MARK	QTY	SIZE	LENGTH	WEIGHT (LBS)	COMMENT
(2) 25'x10'	D1	52	#4	9'-6"	330	(26) LAT. EA. MODULE
	D2	40	#4	24'-6"	655	(20) LONG. EA. MODULE
30'x10'	D1	31	#4	9'-6"	197	(31) LAT. EA. MODULE
	D2	20	#4	29'-6"	395	(20) LONG. EA. MODULE
					TOTAL WEIGHT	1,577

FOUNDATION REINFORCING SCHEDULE ASTM 615 - GRADE 60						
MARK	QTY	SIZE	LENGTH	WEIGHT (LBS)	COMMENT	
HR1	28	#4	9'-6"	178	LONG. EA. APPROACH	
HR2	96	#4	13'-9"	882	LAT. EA. APPROACH; PIER	
HR3	112	#4	3'-0"	225	LONG. EA. PIER	
HR4	2	#4	10'-0"	14	LONG. DUAL FULCRUM PIER	
HR5	12	#4	1'-4"	11	LAT. EA. FULCRUM PIER	
HR6	6	#4	2'-0"	9	LONG. EA. FULCRUM PIER; LC PIER	
HR7	3	#4	1'-0"	2	LAT. LOAD CELL PIER	
VR1	56	#4	2'-9"	103	VERT. EA. END WALL	
					TOTAL WEIGHT	1,425

FOUNDATION CONCRETE 4000 PSI MINIMUM		
LOCATION	QTY (CU. YDS)	
PIERS AS SHOWN	12.9	
FLOOR AT 2" THICK	6.0	
APPROACHES	8.5	
MODULES	12.3	
OPTIONAL APPROACH SUPPORTS	2.6	
TOTAL CONCRETE	42.4	

REINFORCING STEEL NOTES:
1. REINFORCING STEEL SHALL BE FREE OF ALL MUD, DEBRIS, CEMENT GROUT, LOOSE RUST, GREASE, AND OIL.
2. TACK WELDING OF BARS IS PROHIBITED.



SECTION A-A

- NOTES:
- FOUNDATION DESIGN IS BASED ON A MINIMUM SOIL BEARING CAPACITY OF 3000 LB/SQ. FT. FOR SOIL CONDITIONS WHICH DO NOT MEET THIS SPECIFICATION, CONSULT WITH THE THURMAN SCALE COMPANY.
 - THE FOUNDATION SHALL BE INSTALLED AT AN ELEVATION AND LOCATION TO INSURE ADEQUATE DRAINAGE AWAY FROM SCALE. A PERIMETER TRENCH AND AGGREGATE BASE MAY BE ADDED IF DRAINAGE IS NOT SUFFICIENT TO MAINTAIN 3000 LB/SQ. FT. BEARING CAPACITY.
 - BOTTOM OF FOOTERS SHOULD EXTEND BELOW THE FROST LINE. AN 18 INCH FOOTER DEPTH IS MINIMUM.
 - N.I.S.T. H-44 REQUIREMENTS AND LOCAL WEIGHTS AND MEASURES REGULATIONS MAY REQUIRE INSTALLATION PARAMETERS SOMEWHAT DIFFERENT THAN ILLUSTRATED ON THIS PLAN. IN ORDER TO INSURE COMPLIANCE, CONSULT THE LOCAL WEIGHTS & MEASURES OFFICE PRIOR TO CONSTRUCTION.
 - CONCRETE OF 4000 PSI MINIMUM COMPRESSIVE STRENGTH IS REQUIRED, WITH 5-7% AIR ENTRAINMENT. VIBRATE CONCRETE WHEN POURING. FOLLOW LATEST ACI REQUIREMENTS FOR MATERIALS AND CONSTRUCTION. DO NOT CAST UNLESS TEMPERATURE IS ABOVE 40 DEGREES FAHRENHEIT.
 - PIERS MUST BE LEVEL AND IN THE SAME PLANE WITHIN ±1/8 INCH.
 - EXCAVATION, FORMS, REINFORCING STEEL, GUARD POSTS, AND CONCRETE FURNISHED BY OTHERS.
 - DO NOT PLACE REBAR IN CLOSE PROXIMITY OF ANCHOR BOLTS.

THIS DRAWING IS SUPPLIED AS CHECKED BELOW:
 REFERENCE (ESTIMATES ONLY, NOT FOR CONSTRUCTION)
 CERTIFIED FOR CONSTRUCTION, THURMAN SERIAL#
 CUSTOMER:
 CUSTOMER P.O.# _____ DATE: _____
 CUSTOMER APPROVAL, RETURN ONE COPY:
 (ORDER ON HOLD UNTIL SIGNED COPY IS RETURNED)
 APPROVED AS DRAWN, APPROVED BY: _____ DATE: _____
 APPROVED AS NOTED, APPROVED BY: _____ DATE: _____

LET	BY	DATE	REVISION
1	JCR	03/20/15	CHANGED TO TWO 25' SPANS (WAS 3 30' SPANS), UPDATED CONCRETE/REBAR SCHEDULES

UNLESS OTHERWISE SPECIFIED:
DIMENSIONS ARE IN INCHES
TOLERANCES: FRACTIONS 1/8"
#1 1/8"
#2 1/8"
#3-PLACE DECIMAL ±0.005
#4 ±0.010
#5-#8 ±0.015
#9-#12 ±0.020
HOLE DIAMETERS ±1/32"

MATERIAL: A36 FINISH: N/A

DATE: 10/23/12
SCALE: N/A
DRAWN BY: JCR
CHECKED BY: _____
APPROVED BY: _____

8130 60K CLC
80' X 10' FOOTINGS
FOUNDATION (4 SECTION)

DRAWING NUMBER: 92483-FT
SHEET 1 OF 1
REVISION: 1

